

2015

english catalog
www.fallsafe-online.com



Your work.
Our solution.

CONTENTS

The Company

Around the World & Facilities	02
About Our Quality & Customer Service	03
Drop Test Tower & Training	04

For your Knowledge

Swing Fall	05
The Fall Factor	06
Fall Arrest & Clearance distance	07

Products range

Fall Protection Vests	08
Fall Protection Jackets	12
Fall Protection Coverall	14
Fall Protection Harnesses	15
Recommended Accessories	25
Work Positioning Lanyards	27
Lanyards	29
Energy Absorber	32
Anchor Lines	33
Karabiners	35
Hooks	37
Maillon	39
Descenders	40
Rope Clamps	42
Rope Grab	43
Anchor Points	45
Connection Elements	47
Anchor Straps	48
Ropes	50
Carrying Bags	52
Tool Bags	55
Rescue	57
Extreme Environment	62
Fall Arrest Blocks	64





Fall Safe™ around the World



● Fall Safe™ Headquarters ● Fall Safe™ Vendors

COMPANY

Fallsafe-Online, Lda.

ADDRESS

Zona Industrial da Varziela
Rua B - Lote 54
4480-620 Vila do Conde
Portugal, EU

PHONE

+351 252 480 060

FAX

+351 252 480 069

EMAIL

order@fallsafe-online.com

WWW

www.fallsafe-online.com



It is in Vila do Conde, Portugal that most of our development and production areas are located spread along a 2000 square meters area, allowing our collaborators to acknowledge experience and knowledge on the production of our products.

This geographical location allows us the support from quality and industrial training third party institutions.

Innovation is part of our everyday life at **Fall Safe™**, distinguishing us as an PPE manufacturer. We stand for:

We do it. You're safe!



**Fall Safe™ location
Facilities**

About our Quality

Fall Safe™ is an internationally certified company on the following standards: **ISO9001:2008** and **Directive 89/686 EEC**.

This translates us into a company aware of its products importance and of what they stand for on the everyday of workers, using well defined and structured both productive and administrative processes on our quality manual.

Due to its geographical location, **Fall Safe™** relies on support given by third party entities, with technological purposes, cooperating in the development of new products, and improving production processes. As of that **Fall Safe™** has been continuously improving all its machinery and applied technologies, investing in the ones that allow greater product quality control.



Managing relationships with our clients

Customer Service

Fall Safe™ is committed to ensure that our products and services meet your expectations, We are delighted to hear when we are doing well, but we also need to know what we can do better.

If you would like to compliment one of our staff or have a suggestion on how we can improve, we want to know. If we make a mistake, or our service does not meet your expectations, we also want to know.

Quality testing at our Laboratory

Fall Safe™ products are manufactured based on many years of expertise, stringent guidelines and high quality demands. We take great care when selecting high quality raw-material. **Fall Safe™** quality control (QC) laboratories test a wide range of materials, products and components to support **Fall Safe™** product and

material quality requirements, quality assurance programs, and troubleshooting needs. The quality testing laboratories test to international and other recognized fall protection standards. Own product manufacture, quality control on each process and daily deliveries.



Drop Test Tower

Fall Safe™ is synonymous with quality. Our customers expect it, and we go out of our way to deliver it. This includes not only how we develop our products, but also how we manufacture and release them to our customers.

Our exhaustive battery of tests and rigorous inspection processes ensure our products exceed EN – European standards and ANSI/OSHA – American Standards



Training



INTERACTIVE
CONTENT

Safety is an essential when it comes to Work at Heights. Using the appropriate Fall protection equipment is as important as knowing how to operate it and how to scale the risks. **Fall Safe™** offers a selection of Training courses, Fall protection guides, Equipment assembly guides, etc – all to ensure you're safe when working at heights.

Fall Safe™ Training intends to fill a gap in Safety a work, in particular Work at Heights, which has not the due attention. Taking advantage of our experience managing ISO 9001 systems and international training, we've implemented a Training management system for Work at Heights.

The experience and immaturity of our trainers give **Fall Safe™** Training Courses an eminently practical sense, achieved by simulated practice plans and approach methodologies targeted to factual problems, suited to reality.

Fall Training courses search within its attendant's diversity, to prove and develop professional exchange of experiences. Fall Safe's prestige, along with its know-how in research, development, innovation, manufacture and use of Fall Arrest products and solutions, makes us believe that investing in this Training program translates an effort with a positive return for all actors and for their organizations. Our services, specially the Training programs executive, are at your disposal to provide you with the clarification you see fit.



www.fallsafe-online.com/training

Development and Design

Fall Safe™ Products is much more than just fall protection equipment manufacturing company. We are true innovators and have been that way from the very beginning. We don't just take existing equipments and make them our own. We develop new equipment that address the challenges of the every day work. We take worker needs and turn them into fall protection relevant products and bring them to the marketplace as quickly and efficiently. But we don't just do this in a lab office. We take a hands-on approach to developing and improving our products, taking time in worksites listening to professionals who use our equipment every day. We rely on feedback from Fall Safe™ equipment users and experiences in the field to develop products that will ultimately enhance a higher comfort and safety.

Swing Fall

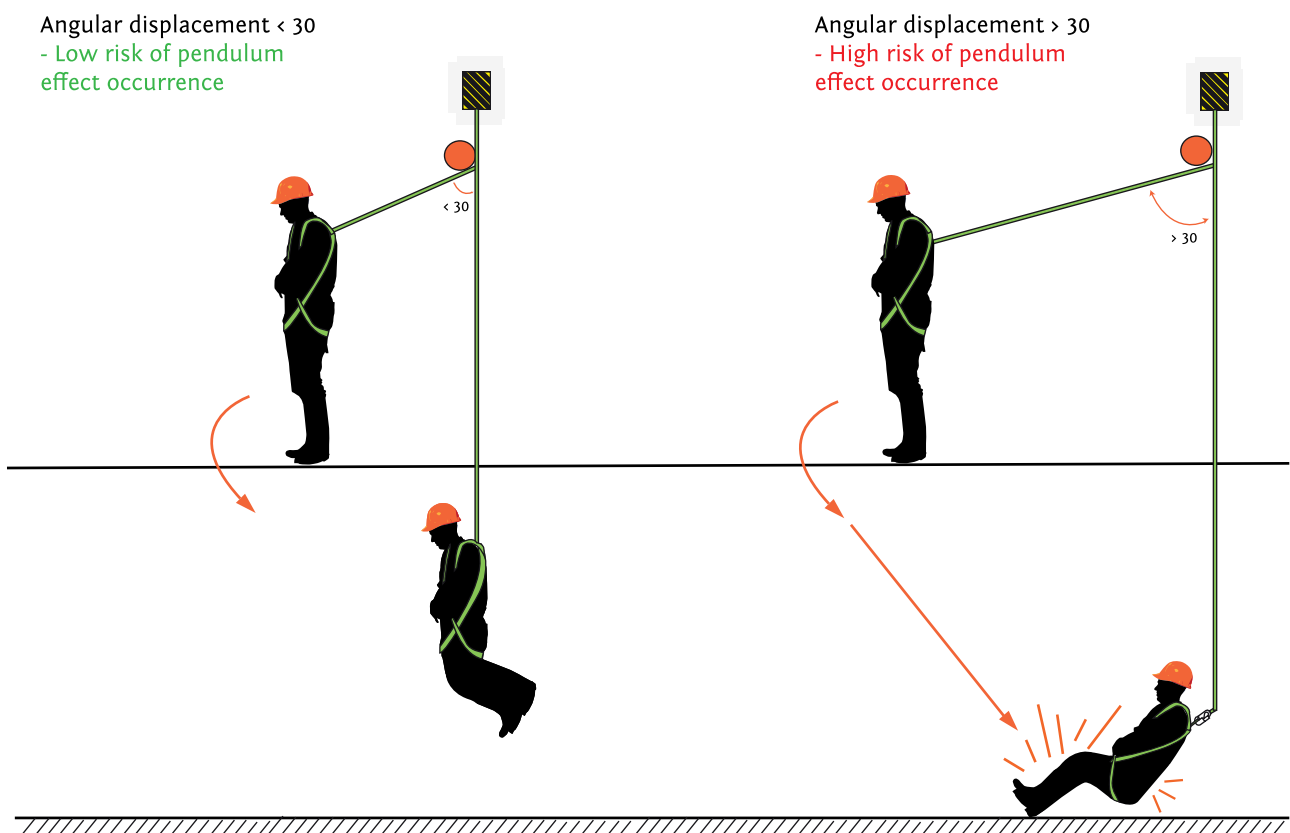
When deciding on a suitable anchor point you must consider the pendulum effect, also know as swing fall. A worker could be in a position that when a fall occurs they could come into contact with obstacles or could land on the floor with severe injuries as a result.

The working angle should always be taken into account.

This angle could cause the improper function of some arrest devices, eg. fall arrest block .

When carrying out a risk assessment always read the information manual for each item of the equipment to ensure the correct use.

The risk Level is defined by angle between the vertical and the worker. The greater the angle the greater the risk.



The Fall Factor

Fall factor is a rating used to evaluate the danger of specific scenarios when working at heights. Fall Factor is calculated using the following equation:

$$\text{Fall Factor} = \text{Height of Fall} / \text{Length of Lanyard}$$

In situations where the Fall Factor will be 0 (e.g. the worker is positioned under the anchor point on a tensioned lanyard) or in situations where the Fall Factor is 1 or less and the freedom of movement is limited to 0.6 m or less, positioning equipment is adequate.

Fall arrest equipment must be used for other situations where the Fall Factor is greater than 1 or more freedom of movement is required.

Systems involving Fall Factors include:

Restraint

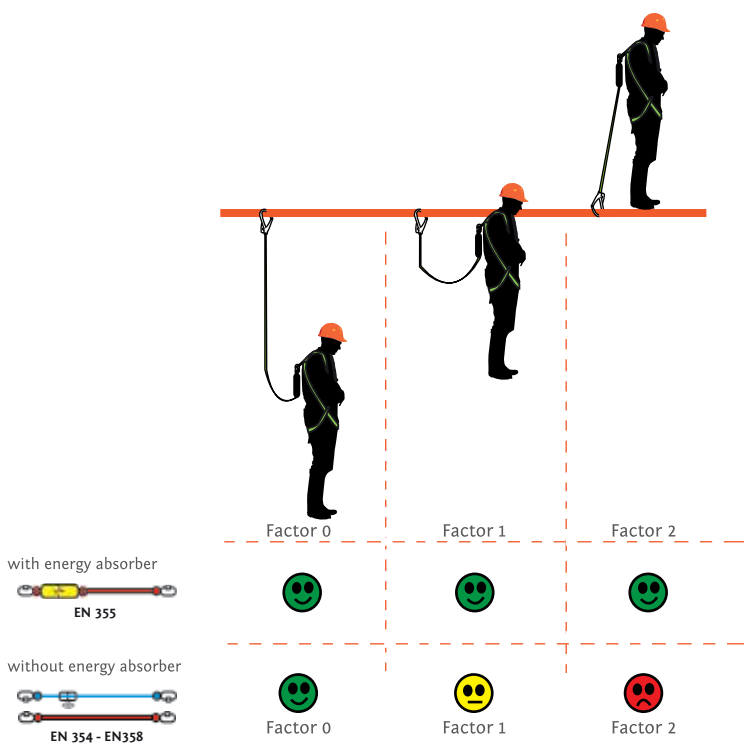
Technique used to prevent a worker from entering a fall risk area (e.g. positioning harness and lanyard EN 358).

Positioning

Technique used to position a worker securely in a fall risk area without creating a Fall Factor scenario (e.g. hanging beneath an anchor point in a positioning harness on a tensioned lanyard EN 358).

Fall Arrest

Technique used to catch and reduce the force of a fall from heights (e.g. use of a Fall Arrest Lanyard EN 354 and Energy Absorbing Lanyard EN 355).





Fall Arrest

Mind the following when using Fall Arrest systems:

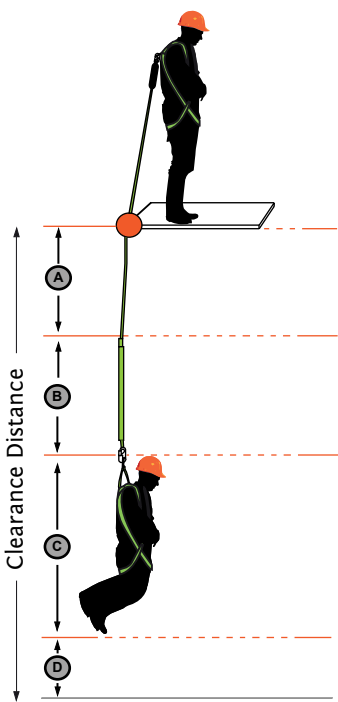
- Energy absorbing lanyards must not exceed 2 meters in length (including connectors)
- The maximum extended length for the new Energy Absorber is 1,5m
- The length of a potential fall must always be minimized with the proper gear and rigging
- The possibility of a worker hitting something during a fall must be eliminated
- Avoid systems that could create a Fall Factor greater than 2
- Calculate the clearance distance below the anchor point to ensure that worker cannot hit the ground:

Clearance Distance =

A (Lanyard length) +
B (Energy absorber extension) +
C (Distance between harness attachment and worker's feet, 1,5 m) +
D (Safe distance from the ground, 1 m)

Refer to the table below to calculate the requisite minimum clearance distances for different situations;

- Rescue equipment (i.e Fall Safe Rescue Kit) and trained rescue workers are necessary for intervention in case of fall.



Clearance Distance

Energy Absorber		Fall Factor		
		0	1	2
Length of Lanyard	2 m	4.5 m	5.3 m	6.0 m
	1.5 m	4.0 m	4.8 m	5.5 m
	1 m	3.5 m	4.3 m	5.0 m

(Test EN 355 with 100kg rigid mass)



Fall Protection Vests

FS320



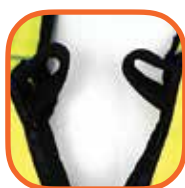
X-treme™ Fall Protection Vest

- Available in colors 10, 20, 30, 40
- 1 dorsal D-ring aluminium for attachment of fall arrest systems
- 2 front loops (to be together) attachment of fall arrest systems
- Integrated Safety harness
- Integrated shoulder pad for greater comfort
- 2 pockets with velcro closing
- Pockets with zipper to hide loops when they are not in use
- 4 point size adjustment
- Sizes: S/M, L/XL, XXL
- Reflective stripes colors 20 and 30
- Compatible with the FS329 Size expander
- Weight 1,9 Kg

CE EN358 EN361 EN471 class 2



colour and size



2 front loops



Deluxe aluminium buckles



Reflective stripes
Colors 20 and 30



FS301



X-treme™ Fall Protection Vest

- Available in colors 10, 20, 30, 40
- 1 dorsal D-ring aluminium for attachment of fall arrest systems
- 2 side D-rings aluminium for work positioning
- Integrated safety harness
- Deluxe connect aluminium buckles
- Compatible with FS329 Size expander
- 2 pocket with velcro closing
- 4 point size adjustment
- Integrated shoulder pad for greater comfort
- Sizes: S/M, L/XL, XXL
- Weight 1,8 Kg

CE EN358 EN361 EN471 class 2



FS303



X-treme™ Fall Protection Vest

- Available in colors 10, 20, 30, 40
- 1 dorsal + 1 frontal D-ring aluminium for attachment of fall arrest systems
- Integrated safety harness
- Deluxe connect aluminium buckles
- Compatible with FS329 Size expander
- 2 pocket with velcro closing
- 3 point size adjustment
- Integrated shoulder pad for greater comfort
- Sizes: S/M, L/XL, XXL
- Weight 1,7 Kg

CE EN361 EN471 class 2



FS308



X-treme™ Fall Protection Vest

- Available in colors 10, 20, 30, 40
- 1 dorsal + 1 frontal D-ring aluminium for attachment of fall arrest systems
- 2 side D-rings for work positioning
- Integrated safety harness
- Deluxe connect aluminium buckles
- Integrated shoulder pad for greater comfort
- Compatible with FS329 Size expander
- 4 point size adjustment
- Sizes: S/M, L/XL, XXL
- Weight 1,9 Kg

CE EN358 EN361 EN471 class 2



FS307



X-treme™ Fall Protection Vest

- Available in colors 10, 20, 30, 40
- 1 dorsal D-ring aluminium for attachment of fall arrest systems
- Integrated safety harness
- Deluxe connect aluminium buckles
- Compatible with FS329 Size expander
- 2 pocket with velcro closing
- 3 point size adjustment
- Integrated shoulder pad for greater comfort
- Sizes: S/M, L/XL, XXL
- Weight 1,6 Kg

CE EN361 EN471 class 2



FS322



X-treme™ Fall Protection Vest

- Available in colors 10, 20, 30, 40
- 1 dorsal D-ring aluminium for attachment of fall arrest systems
- 2 front loops (to be together) attachment of fall arrest systems
- Integrated safety harness
- Deluxe connect aluminium buckles
- Compatible with FS329 Size expander
- 2 pocket with velcro closing
- 3 point size adjustment
- Integrated shoulder pad for greater comfort
- Sizes: S/M, L/XL, XXL
- Weight 1,7 Kg

CE EN361 EN471 class 2



FS300



Ekman Safety™ Fall Protection Vest

- Available in colors 10, 20, 30
- 1 dorsal D-ring for attachment of fall arrest systems
- Integrated safety harness
- Standard buckles and steel D-rings in black
- Compatible with FS330 Size expander
- 2 pocket with velcro closing
- 3 point size adjustment
- Sizes: S/M, L/XL, XXL
- Weight 1,6 Kg

CE EN361 EN471 class 2



FS304



Ekman Safety™ Fall Protection Vest

- Available in colors 10, 20, 30
- 1 dorsal + 1 frontal D-ring for attachment of fall arrest systems
- 2 side D-rings for work positioning
- Integrated safety harness
- Standard buckles and steel D-rings in black
- Compatible with FS330 Size expander
- 2 pocket with velcro closing + 4 point size adjustment
- Sizes: S/M, L/XL, XXL
- Weight 1,9 Kg

CE EN358 EN361 EN471 class 2



FS305



Ekman Safety™ Fall Protection Vest

- Available in colors 10, 20, 30
- 1 dorsal + 1 frontal D-ring for attachment of fall arrest systems
- Integrated safety harness
- Standard buckles and steel D-rings in black
- Compatible with FS330 Size expander
- 2 pocket with velcro closing
- 3 point size adjustment
- Sizes: S/M, L/XL, XXL
- Weight 1,7 Kg

CE EN361 EN471 class 2



FS306



Ekman Safety™ Fall Protection Vest

- Available in colors 10, 20, 30
- 1 dorsal D-ring for attachment of fall arrest systems
- 2 front loops (to be together) attachment of fall arrest systems
- Integrated safety harness
- Standard buckles and steel D-rings in black
- Compatible with FS330 Size expander
- 2 pocket with velcro closing
- 3 point size adjustment
- Sizes: S/M, L/XL, XXL
- Weight 1,7 Kg

CE EN361 EN471 class 2



FS321



Ekman Safety™ Fall Protection Vest

- Available in colors 10, 20, 30
- 1 dorsal D-ring for attachment of fall arrest systems
- 2 front loops (to be together) attachment of fall arrest systems
- 2 side D-rings for work positioning
- Integrated safety harness, 4 point size adjustment
- Standard buckles and steel D-rings in black
- 2 Pockets with zipper to hide loops when they are not in use
- Compatible with FS330 Size expander
- Sizes: S/M, L/XL, XXL
- Weight 1,9 Kg

CE EN358 EN361 EN471 class 2



FS323



Ekman Safety™ Fall Protection Vest

- Available in colors 10, 20, 30
- 1 dorsal D-ring for attachment of fall arrest systems
- 2 side D-rings for work positioning
- Integrated safety harness, 3 point size adjustment
- Standard buckles and steel D-rings in black
- Compatible with FS330 Size expander
- 2 pocket with velcro closing
- Sizes: S/M, L/XL, XXL
- Weight 1,8 Kg

CE EN358 EN361 EN471 class 2

Fall Protection Jackets

FS4242

X-treme™ Lite Fall Protection Jacket

- Sports jacket style that moves with you and increases your performance
- Windproof and water proof fabric to keep the cold out, hi-tech air flow membrane keeps you dry and comfortable and let the transpiration out
- Cordura® fabric with extreme durability and resistance
- Integrated safety harness
- Pockets with zipper to hide loops when they are not in use
- Dorsal D-ring aluminium attachment point for fall arrest protection
- 2 front loops (to be together) attachment of fall arrest systems
- Sit support strap stays low and comfortable
- KWIK connect aluminium buckles
- Vivo reflector
- 3 point size adjustment
- Sizes: S/M, L/XL, XXL
- Weight 1,4 Kg

CE EN361



See More



Dorsal
D-ring aluminium



KWIK aluminium
connect buckles



Vivo
Reflector



FS4000

Ekman Safety™ Fall Protection Jacket

- Integrated safety harness
- Available in colors 10, 20, 30, 85 and 95
- 1 dorsal D-ring for attachment of fall arrest systems
- 4 large pockets with velcro flaps
- Size adjustment at chest and legs straps gives perfect fit
- Deluxe connect aluminium buckles
- Lateral adjustment (zipper system)
- Sizes: S/M, L/XL, XXL
- Weight 2,49 Kg

CE EN361 EN471 Class 3



FS4500

Ekman Safety™ Fall Protection Parka

- Available in colors 20, 30, 80, 85, 90 and 95
- Integrated safety harness
- Dorsal D-ring for attachment of fall arrest systems
- Dorsal attachment point, covered for rain protection
- Size adjustment at waist strap gives perfect fit
- Deluxe connect aluminium buckles
- Large pockets with velcro closing
- Sizes: S/M, L/XL, XXL
- Weight 2,5 Kg

CE EN361 EN471 Class 3



FS4600

Ekman Safety™ Fall Protection Jacket

- Available in colors 20, 30, 80, 85, 90 and 95
- Integrated safety harness
- Dorsal D-ring aluminium for attachment of fall arrest systems
- Size adjustment at waist strap gives perfect fit
- Deluxe connect aluminium buckles
- Large pockets with velcro closing
- Sizes: S/M, L/XL, XXL
- Weight 2,5 Kg

CE EN361 EN471 Class 3

Fall Protection Coverall

FS400



Ekman Safety™ Fall Protection Coverall

- Use as Workwear or Personal Protective Equipment
- Integrated full body harness, to prevent falls from height
- Dorsal D-ring for attachment of fall arrest systems
- Chest strap for a better adjustment
- Large pockets - chest, front and back
- Heavy duty fabric and front zipper
- Easy and fast to wear
- Colors 10 standard, 20 Hi-Vis Orange, 30 Hi-Vis Lime, 40 Antiflame
- Weight 2,0 Kg

CE EN361



Colour and
size chart



Chest
Strap



FS410 available
with Front D-ring

Fall Protection Harnesses

FS242



X-treme™ Harness Lite

- 1 Dorsal + 2 front loop for attachment of fall arrest systems
- Harness with 2 colors for easier orientation when putting on
- Light and easy to put on harness, can be used in any industry
- Sit support strap stays low and comfortable
- KWIK connect aluminium buckles, breaking strength 25KN
- High strength polyester stitching thread No. 10 > 180N
- IZY buckles for easy and smooth adjustment at shoulders
- Fall arrest indicator
- Low leg straps for improved comfort
- X-treme™ lite padded comfort shoulders and legs
- 5 point size adjustment
- Sizes: S/M, L/XL, XXL
- Weight 0,988 Kg

CE EN361



FS242
Standard



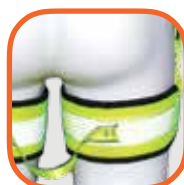
FS242
Reflex



Light and
Breathable dorsal
padding



Light weight
988 g



FS242
Reflex



FS202



X-treme™ Classic Harness

X-treme™ Classic vest style harness is the most comfortable multi-purpose harness, It is designed to wrap around the user at shoulders, legs and hips, it is very quick to put and buckle up the 3 straps. You are on the work in no time.

- 1 dorsal D-ring + 2 front loops
- Deluxe aluminium buckles and black anodized D-rings in aluminium
- X-treme™ cushioned AIR flow padding that keeps moisture away and keeps you dry and comfortable
- Soft edging on padding to avoid chafing
- Lanyard keepers for control of lanyard legs
- 5 point size adjustment for perfect fit, now with IZY buckles adjustment at shoulders
- Reflex pattern at dorsal to keep you visible and safer
- Fall indicators
- Sizes: S/M - L/XL - XXL | Weight: 1,2Kg

CE EN361

FS222



X-treme™ Ultra Harness

X-treme™ Ultra vest style harness is the most comfortable multi-purpose harness, It is designed to wrap around the user at shoulders, legs, hips and waist, it is very quick to put and buckle up the 4 straps. You are on the work in no time.

- 1 dorsal D-ring + 2 front loops
- 2 side D-rings for work positioning
- X-treme™ Croc belt for the most comfortable and x-wide support during long work days.
- Deluxe aluminium buckles and black anodized D-rings in aluminium
- X-treme™ cushioned AIR flow padding that keeps moisture away and keeps you dry and comfortable
- Soft edging on padding to avoid chafing
- Lanyard keepers for control of lanyard legs
- 6 point size adjustment for perfect fit, now with IZY buckles adjustment at shoulders
- Reflex pattern at dorsal to keep you visible and safer
- Fall indicators
- Sizes: S/M - L/XL - XXL | Weight: 1,5Kg

CE EN358 EN361

FS221



X-treme™ Roofwalker

X-treme™ Roofwalker vest style harness is the most comfortable multi-purpose harness, It is designed to wrap around the user at shoulders, legs, hips and waist, it is very quick to put and buckle up the 4 straps. The Roofwalker was specific designed for the safety of the worker on the roof tops. It has a unique patented design, in the event of a fall the harness positioning points transforms to fall arrest system points and includes a integrated energy absorber.

- 1 dorsal D-ring + 2 front loops
- 2 side D-rings for work positioning
- Integrated energy absorber
- X-treme™ Croc belt for the most comfortable and x-wide support during long work days.
- Deluxe aluminium buckles and black anodized D-rings in aluminium
- X-treme™ cushioned AIR flow padding that keeps moisture away and keeps you dry and comfortable
- Soft edging on padding to avoid chafing
- Lanyard keepers for control of lanyard legs
- 6 point size adjustment for perfect fit, now with IZY buckles adjustment at shoulders
- Reflex pattern at dorsal to keep you visible and safer
- Fall indicators
- Sizes: S/M - L/XL - XXL | Weight: 2,3Kg

CE EN355 EN361





FS224



X-treme™ Scaffolder Harness

X-treme™ Scaffolder vest style harness is the most comfortable multi-purpose harness. It is designed to wrap around the user at shoulders, legs and hips, leg strap designed to stay low and better comfort when hanging, very quick to put and buckle up the 3 straps. You are on the work in no time.

- 1 dorsal D-ring + 1 chest V-ring for fall arrest systems
- KWIK and Deluxe aluminium buckles and black anodized D-ring in aluminium
- X-treme™ cushioned AIR flow padding that keeps moisture away and keeps you dry and comfortable
- Soft edging on padding to avoid chafing
- Lanyard keepers for control of lanyard legs
- 5 point size adjustment for perfect fit, IZY buckles adjustment at hips
- Reflex pattern on dorsal to keep you visible and safer
- Fall indicators
- Sizes S/M, L/XL, XXL | Weight: 1,6kg

CE EN361



FS240



X-treme™ Flash Harness

- Electrical utility harness solution
- 1 dorsal D-ring and 2 front loops (to be together) for attachment of fall arrest systems
- 2 side D-rings for work positioning
- Sit harness with 2 ventral loops for rope access
- Ergonomic Crock x-wide back padding improves comfort
- Removable back protection
- Very quick and easy to put on and take off
- 5 point size adjustment
- KWIK connect aluminium buckles
- Sizes: S/M, L/XL, XXL
- Weight 2,0kg



See More

CE EN358 EN361 EN813



FS227



X-treme™ Energy Harness

- Heavy duty rope access harness
- Dorsal D-ring + Chest V-ring for Fall arrest
- Ventral D-ring for sit harness, rope access
- 2 side D-rings for positioning
- Ergonomic Crock x-wide back padding improves comfort
- Removable back protection
- Padded AIR shoulders and Stress indicator
- Triple lock aluminium chest karabiner
- KWIK connect aluminium buckles
- 6 O-rings for tool holders
- Ultra soft legs pads that move with the user, doesn't chafe
- Chest harness can be detached from seat harness
- High tenacity, water repellent high visibility polyester webbing
- Sizes: S/M, L/XL, XXL
- Weight 2,0 Kg



See More

CE EN358 EN361 EN813

Fall Protection Harnesses

FS243

X-treme™ Spider Harness

The X-treme™ Spider harness is specific designed for rope access and rescue in order to cover any work situation in fall protection, work positioning and restraint. Fully adjustable technical harness with increased comfort for the most intense work at height in any hanging direction. Shoulder straps can be totally removed and the harness can be used only as a sit harness.

The X-treme™ Spider harness incorporates the most advanced technologies and material and ideal for the professional in activities as industrial rope access and rigging, rescue and emergency services but also favourable used in maintenance in tower structures, wind energy and arborist.



See More

FS243.01

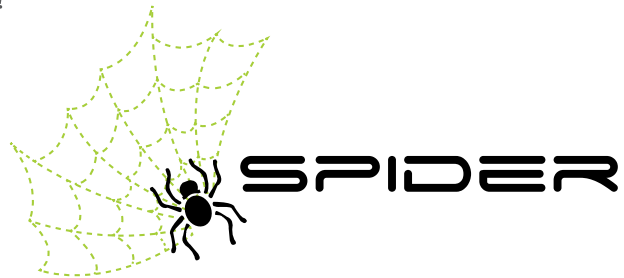
X-treme™ Spider Combo 1

The genuine X-treme™ Spider Arachnida chest harness (FS243.04) for optimized upright body position and minimized abdominal fatigue for extended working hours at difficult access combined with the X-treme™ Spider sit harness (FS243.03).

- The genuine X-treme™ Spider Arachnida wrap around design with its characteristic 4 arms, was designed to support the upper body perfectly and with comfort without interfering users normal movement.
- NEXUS sling made with Dyneema® The World's Strongest Fiber™, is the link between Arachnida Chest and Spider Sit harness and when connected forms a full body harness compliant with EN361. The NEXUS sling includes a chest loop attachment point for connecting a fall arrest system also used with a karabiner to attach to work rope for optimized upright body position.
- Ventral aluminium D-ring attachment point as EN813 for sit harness, rope access, divides the user weight evenly between the waist belt and the leg straps at suspended work for optimal comfort and control.
- Newly designed ventral loop for better and safer organisation when several karabiners are attached.
- Separate loops for the SERRIO seat which will free up space at ventral loop for other work systems. SERRIO seat available separately.
- 2 lateral aluminium D-rings attachments points for positioning as EN358 with added parking position function to avoid undesired catching during work.
- Sizes: S/M, L/XL, XXL | Weight: 2,1 kg

See more features for each component on next pages !

CE EN358 EN813 EN361



FS2052
Serrio
Seat



FS8050
Arrow Ventral
Rope Clamp



Gear
Loops

FS243.02

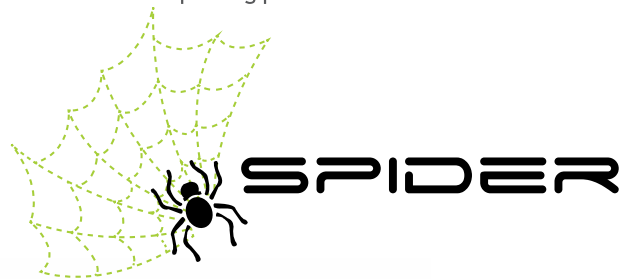
X-treme™ Spider Combo 2

The classic X-treme™ Spider Araneae chest harness (FS243.05) with V-styling for all-round rope access and rescue activities combined with the X-treme™ Spider sit harness (FS243.03).

- Dorsal aluminium D-ring attachment point for connecting a fall arrest system as EN361, D-ring can easily be hidden and stored to not get in the way of a bag or load on the back.
- Chest aluminium D-ring attachment point as EN361 for connecting a fall arrest system.
- All support padding made with breathable foam for maximum comfort and excellent support for extended periods of use.
- Ventral aluminium D-ring attachment point as EN813 for sit harness, rope access, divides the user weight evenly between the waist belt and the leg straps at suspended work for optimal comfort and control.
- Newly designed ventral loop for better and safer organisation when several karabiners are attached.
- Separate loops for the SERRIO seat which will free up space at ventral loop for other work systems. SERRIO seat available separately.
- 2 lateral aluminium D-rings attachments points for positioning as EN358 with added parking position function to avoid undesired catching during work.
- Sizes: S/M, L/XL, XXL
- Weight: 1,9 kg

See more features for each component on next pages !

CE EN358 EN813 EN361



FS8052
Arrow Ventral
Rope Clamp



Lanyard
Keepers



FS8060
TRUCKER
Tool Holder

FS243.03

X-treme™ Spider Sit Harness

New unique features for a professional sit harness, combines perfectly with the new chest harnesses Arachnida or Araneae to give the user maximum choice.

- Ventral aluminium D-ring attachment point as EN813 for sit harness, rope access, divides the user weight evenly between the waist belt and the leg straps at suspended work for optimal comfort and control.
- Newly designed ventral loop for better and safer organisation when several karabiners are attached.
- Separate loops for the SERRIO seat which will free up space at ventral loop for other work systems. SERRIO seat available separately.
- 2 lateral aluminium D-rings attachments points for positioning as EN358 with added parking position function to avoid undesired catching during work.
- All support padding at waist belt and leg loops designed ergonomically and with air-flow foam for maximum comfort and excellent support for extended periods of use.
- KWIK connect aluminium buckles at leg loops with easy opening and closing without the need to readjust them, IZY buckles with smooth and precise adjustment at waist belt.
- Gear loops in thin and rigid material for easier attaching of karabiners, located at each side and one at the back for complete organisation of karabiners and material with a load up to 10kg.
- Fall arrest indicator for safe and easy verification.
- Sizes: S/M, L/XL, XXL
- Weight: 1.3 Kg

CE EN358 EN813



Loops for the
SERRIO seat



Gear Loops



KWIK connect
buckles



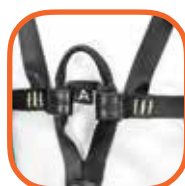
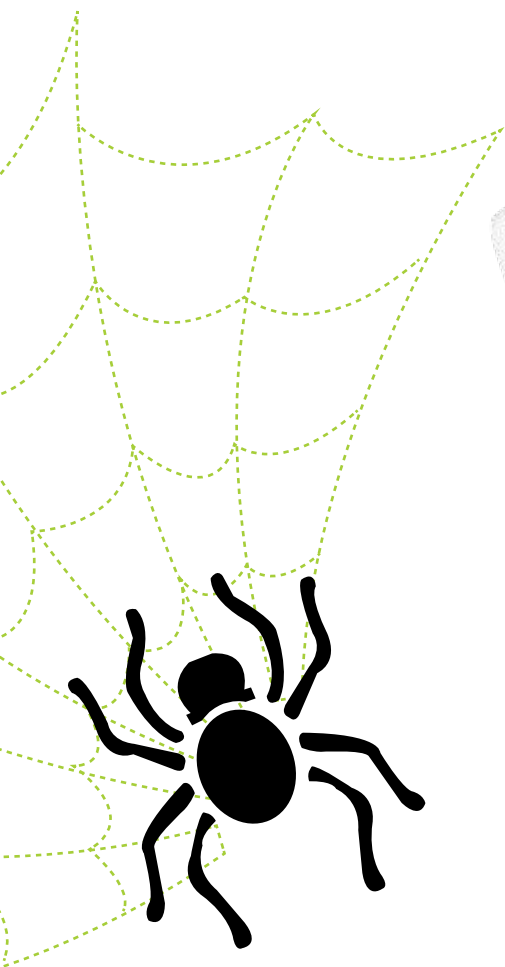
X-treme™ Spider Arachnida Chest Harness

The genuine X-treme™ Spider Arachnida chest harness for optimized upright body position and minimized abdominal fatigue for extended working hours at difficult access.

- The genuine X-treme™ Spider Arachnida wrap around design with its characteristic 4 arms, was designed to support the upper body perfectly and with comfort without interfering users normal movement.
- NEXUS sling made with Dyneema® The World's Strongest Fiber™, is the link between Arachnida Chest and Spider Sit harness and when connected forms a full body harness compliant with EN361. The NEXUS sling includes a chest loop attachment point for connecting a fall arrest system also used with a karabiner to attach to work rope for optimized upright body position.
- Dorsal aluminium D-ring attachment point for connecting a fall arrest system, D-ring can easily be hidden and stored to not get in the way of a bag or load on the back.
- Fully adjustable chest harness made with lighter webbing width 30mm made in high quality polyester webbing also width 30mm IZY buckles with smooth and precise adjustment.
- All support padding made with air-flow foam for maximum comfort and excellent support for extended periods of use.
- Chest loops for NEXUS sling protected with durable leather, small gear loops under arms for gear and material.
- Ventral karabiner with triple locking closing for added safety.
- Chest harness can easily and safely be attached or detached at the rear buckle and ventral karabiner to be used as a full body harness or only as a sit harness.
- ARROW ventral rope clamp (FS8050) for ascending ropes can be attached easily to the NEXUS sling and ventral connector. Available separately.
- Sizes: S/M, L/XL, XXL
- Weight: 800g

CE EN361

Only when combined with X-treme™ Spider sit harness and Nexus sling.



NEXUS Sling
in Dyneema®



D-Ring
Visible



D-Ring
Hidden

FS243.05

X-treme™ Spider Araneae chest harness

The classic X-treme™ Spider Araneae chest harness with V-styling for all-round rope access and rescue activities

- Dorsal aluminium D-ring attachment point for connecting a fall arrest system as EN361, D-ring can easily be hidden and stored to not get in the way of a bag or load on the back.
- Chest aluminium D-ring attachment point as EN361 for connecting a fall arrest system.
- All support padding made with air-flow foam for maximum comfort and excellent support for extended periods of use.
- Ventral karabiner with triple locking closing for added safety.
- Chest harness can easily and safely be attached or detached at the rear buckle and ventral karabiner to be used as a full body harness or only as a sit harness.
- Shoulder straps with 45mm IZY buckles with smooth and precise adjustment.
- ARROW ventral rope clamp (FS8050) for ascending ropes can be attached easily to the chest and ventral connector.
Available separately.
- Sizes: S/M, L/XL, XXL
- Weight: 600g

CE EN361

Note! Only when combined with X-treme™ Spider sit harness



Frontal
D-Ring



D-Ring
Visible



D-Ring
Hidden



FS205



Ekman Safety™ Electrical Harness



- 1 dorsal + 2 front loop for attachment of fall arrest systems
- 2 side waist D-rings cranked and freely rotatable for work positioning
- Designed for maintenance work on electricity and telephone pylons or overhead cables.
- Dorsal elastic black webbing for greater comfort/mobility
- Fall arrest indicator and Rings for accessories
- Sizes: S/M, L/XL, XXL
- Weight 2 kg

CE EN358 EN361

FS209



Ekman Safety™ Fall Protection Harness



- 1 dorsal + 1 front D-ring for fall arrest systems attachment
- 5 point size adjustment
- Standard buckles in light strength steel
- Sit support strap stays low and comfortable
- Fall arrest indicator
- Standard buckles high strength steel support
- Sizes: S/M, L/XL, XXL
- Weight 1,2 kg

CE EN361

FS201



Ekman Safety™ Fall Protection Harness



- 1 dorsal D-ring + 2 front loops - fall arrest systems attachment
- 3 point size adjustment
- Sit support strap stays low and comfortable
- Built in 2 colors for easier orientation when putting on
- Fall arrest indicator and lanyard keepers
- Standard steel buckles
- Sizes: S/M, L/XL, XXL
- Weight 1,1 kg

CE EN361

FS200



Ekman Safety™ Fall Protection Harness



- 1 dorsal D-ring for fall arrest systems attachment
- 3 point size adjustment
- Built in 2 colors for easier orientation when putting on
- Sit support strap stays low and comfortable
- Fall arrest indicator and lanyard keepers
- Standard steel buckles
- Sizes: S/M, L/XL, XXL
- Weight 0,9kg

CE EN361

Recommended accessories that go perfect with some of our Harnesses.



FS8050

Arrow Ventral Rope Clamp

- Easy to install for ascending ropes
- Can be attached easily to the chest and ventral connector.
- Compatible with:
 - FS227
 - FS243
 - FS231
 - FS33110
- Size: S/M | L/XL
- Weight: 0,1 Kg

CE EN567



FS2052

Serrio Seat

- Provides more comfort when suspended from the harness
- Use with our Fall arrest or Work positioning harnesses with ventral attachment
- Manufactured with zipper that allows removing the rigid component for easier cleaning, and replace fill
- IZY Buckles for easy and smooth adjustment of length
- Wide sitting area ensures good stability and allows comfortable hanging
- Suspension straps do not press on your thighs
- 3 loops for gear or material suspension
- Weight 1,5 Kg



FS8016

Tools Lanyard Standard

- Single aluminium karabiner: holds and guards tools to help worker prevent injury, damage and loose productivity from dropped tools
- Applications: Construction, utilities, ironworkers, carpentry, roofing, masonry and arborist
 - Elastic cord with adjustable barrel lock for tool attachment
 - Elastic cord surrounded by tubular nylon webbing
 - Maximum safe work capacity 4,6Kg
 - Length 0,7-1,2m
 - Weight 0,1 Kg



FS8017

Tools Lanyard Heavy Duty

- Heavy duty tool safety lanyard for extreme environments
- Inox metal components
- Holds and guards tools to help worker prevent injury, damage and lost productivity from dropped tools
- Maximum safe work capacity 4,6Kg
- Length: 0,7 extends to 2m
- Weight: 0,3 Kg



FS800-SP1

Safestep

- Avoids hang trauma after fall
- Easy to use
- Easy to install on any harness
- Recommended to use 2pcs/harness for stability
- Weight 0,1 Kg



FS800-SP2

Safestep Duo

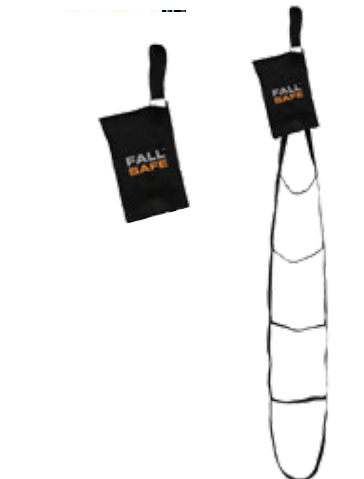
- Easy to use and fits all leg lengths
- Unique design, quick connect buckle
- Easy length adjustment
- Avoids hang trauma after fall
- Easy to install on any harness
- Weight 0,1 Kg



FS800-SP3

Foot Loop

- Eases user ascension
- Compatible with FS33330 / FS3331
- Adjustable length according to user's height
- Easy to install and use
- 25mm polyester webbing, breaking strength 25 kN
- Stitches with high strength polyester thread no. 10 > 180N
- Length max. 1,5m
- Weight 0,1 Kg



FS800-SP4

Looping

- Can be clipped on the rope clamp for rope ascents
- Center foot design for easier use
- Storage bag
- Weight 0,15 Kg

Work Positioning Lanyards

FS079

X-treme™ Work Positioning Lanyard MAX™

- Max™ length adjuster, easy adjust, one-hand operated, light aluminium
- 11mm Rope kernmantel type, breaking strength > 28KN
- Karabiner and Hook in light aluminium
- Light and easy to carry
- Aluminium hook, EN362 certified, breaking strength > 22KN
- 20mm opening aluminium karabiner, EN362 certified
- Length 2 or 3m
- Weight 0,9 Kg

CE EN358



Max™ length
adjuster



Light aluminium
Hook and Karabiner

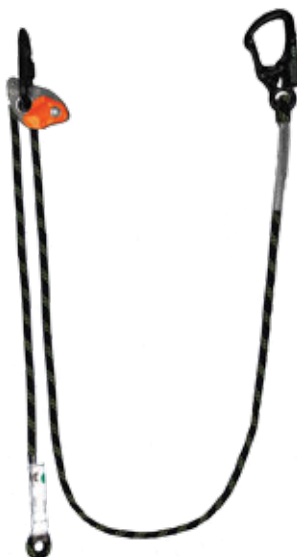


FS081

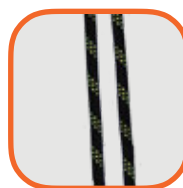
Work Positioning Lanyard Finch™

- Aluminium black snap hook, breaking strength > 22KN (EN362)
- Stitches with high strength polyester thread no. 10 >180N
- 11mm Kernmantle rope (core in polyamide; sheath in polyester), breaking strength 28KN
- Karabiner in light alloy aluminium with 20mm opening double locking function and black anodized (EN362 certified)
- Finch aluminium length adjuster - weights only 0,150 Kg
- One-hand operated with optimal speed control
- Length 2 or 3m
- Weight 0,565 Kg

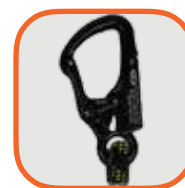
CE EN358



Finch™ one-hand length adjuster



Mamba Negra Rope 11mm



Aluminium Snap Hook



FS054-CC-2M

Work Positioning Lanyard Lite

- 2 aluminium hooks
- 8-ring style length adjuster
- 11mm Rope kernmantel nylon
- Length 2m
- Weight 0,7 kg

CE EN358, EN354



FS052K - 11mm kernmantel type rope, available

FS052H/K

Work Positioning Lanyard

- Steel snap hook, EN362 certified, supports > 22KN
- 20mm opening steel karabiner with double locking function
- Attachment rope specially designed for exigent works
- Stainless steel length adjuster avoids corrosion caused by excessive rope wear
- EN362 compliant connectors
- Tubular web in high resistant polyester for increased lifetime
- Length adjustment in stainless steel to avoid corrosion > 18KN
- Stitches with high strength polyester thread no. 10 >180N
- 14mm nylon rope 3-strand version H, 11mm kernmantel version K
- Length 2m, 3m, 4m or 5m
- Weight 0,9 Kg

CE EN358

Lanyards

Tune up your lanyards

Select the lanyard that suits your needs better then select what Hooks and Karabiners you want it to come with.

Example



Available Hooks and Karabiners

Select the lanyard that suits your needs better then select what Hooks and Karabiners you want it to come with.



A - FS820
Aluminium Alloy Karabiner



B - FS821
Aluminium Alloy Hook



C - FS33562
Aluminium Light Alloy



D - FS831
Aluminium Snap Hook



E - FS836
Steel Snap Hook



H - FS33500-2L
Zinc-plated Steel Karabiner



K - FS826
Aluminium Alloy Snap Hook



L - FS802
Zinc-plated Steel Karabiner



M - FS825
Zinc-plated Steel Snap Hook



N - FS843
Zinc-plated Steel Large Pipe Hook



R - FS846
Stainless Steel Karabiner



S - FS822
Stainless Steel Hook



T - FS823
Aluminium Alloy Karabiner





FS504

Lanyard with Energy Absorber

- 43mm stretchable webbing reduce trip hazard
- Energy absorber pack limits impact force below 6kN
- Length/Weight
 - 1,0m - 0,44 Kg
 - 1,5m - 0,48 Kg
 - 2,0m - 0,52 Kg

CE EN354 EN355



FS505

Double Lanyard with Energy Absorber

- 43mm stretchable webbing reduce trip hazard
- Y-leg lanyard
- Energy absorber pack limits impact force below 6kN
- Length/Weight
 - 1,0m - 0,65 Kg
 - 1,5m - 0,68 Kg
 - 2,0m - 0,71 Kg

CE EN354 EN355



FS501R

Lanyard with Energy Absorber

- 11mm Kernmantel rope
- Energy absorber pack limits impact force below 6kN
- Heavy duty stitched ends
- Length/Weight
 - 1,0m - 0,42 Kg
 - 1,5m - 0,47 Kg
 - 2,0m - 0,54 Kg

CE EN354 EN355



FS502R

Double Lanyard with Energy Absorber

- 11mm Kernmantel rope
- Y-leg lanyard
- Energy absorber pack limits impact force below 6kN
- Heavy duty stitched ends
- Length/Weight
 - 1,0m - 0,42 Kg
 - 1,5m - 0,47 Kg
 - 2,0m - 0,54 Kg

CE EN354 EN355



FS501

Adjustable Lanyard with Energy Absorber

- Energy absorber pack
- Energy absorber pack limits impact force below 6kN
- 8-ring length adjuster
- Length/Weight
1,4m - 2m - 0,39 Kg

CE EN354 EN355



FS502

Double Lanyard with Energy Absorber

- Heavy duty 25mm webbing
- Y-leg lanyard
- Energy absorber pack limits impact force below 6kN
- Length/Weight
1,0m - 0,31 Kg
1,5m - 0,49 Kg
2,0m - 0,60 Kg

CE EN354 EN355



FS595

Lanyard with Streamline Energy Absorber

- 43mm stretchable tubular webbing > 25KN
- Integrated streamline energy absorber - stops your fall with great smoothness and silence - no need for the bulky pack
- Energy absorber limits impact force below 6kN
- Length/Weight
1,0m - 0,17 Kg
1,5m - 0,19 Kg
2,0m - 0,21 Kg

CE EN354 EN355



FS596

Lanyard with Streamline Energy Absorber Double

- 43mm stretchable tubular webbing > 25KN
- Integrated streamline energy absorber - stops your fall with great smoothness and silence - no need for the bulky pack
- Energy absorber limits impact force below 6kN
- Length/Weight
1,0m - 0,32 Kg
1,5m - 0,35 Kg
2,0m - 0,38 Kg

CE EN354 EN355

Energy Absorber



+



+



FS503

Energy Absorber

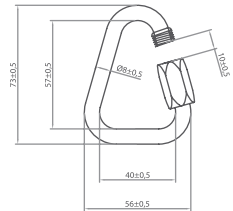
- Reduces impact forces below 6kN during a fall
- Label accessible through zipper
- 44mm polyester webbing, breaking strength > 25kN
- Use with Lanyards without energy absorber or alone with connectors
- Length 0,4 m, extends up to 1,5m
- Weight 0,5 Kg

CE EN355

FS33561

Triangular Quick Link

- Strength 27kN
- Galvanized steel - Black
- Opening 11,5mm
- Weight 0,1 Kg



CE EN362

FS082

Lanyard Ropes

- Kernmantle rope mamba negra with semi static properties
- Rope diameter 11mm
- For fall arrest always combine with energy absorber
- Core in polyamide, sheath in polyester, breaking strength >25kN
- Length/Weight 0,5m - 0,1 Kg | 0,75m - 0,11 Kg | 1m - 0,12 Kg, 1,5m - 0,14 Kg | 2m - 0,16 Kg

CE EN354

FS080

Progression Canyaro

- Lanyard in "V" that allows connection during the progression a lifeline.
- Mamba negra rope lanyard limits energy transmitted to the user during a limited fall (do not go above the anchor point)
- Length:
Long Arm - 0,65m | Short Arm - 0,30m
- Weight: 0,15Kg

CE EN354

Anchor Lines

FS600

Ekman Safety™ Grab-on Anchor Line

- 1 karabiner with 18mm opening to connect into anchor point on structure and other to connect to front chest attachment or dorsal attachment on full body harness, fall protection vest or fall protection overall
- Stainless steel fall arrester with automatic locking Grab-on
- 11mm Kernmantle rope mamba negra
- Stainless steel fixed fall arrester moves along with the user, locks immediately in fall situations
- 20cm extension strop for easier use
- Heavy duty stitched ends
- Length/Weight 5m - 0,8 Kg | 10m - 1,0 Kg | 15m - 1,2 Kg
20m - 1,4 Kg | 25m - 1,6 Kg | 30m - 1,8 Kg | 50m - 2,3 Kg
65m - 2,5 Kg

CE EN353-2



18mm Karabiner
with screw lock



Fall arrester
Grab-on



Extension
stropp





FS630

Anchor Line

- 11mm Mamba Negra rope
- 1 Karabiner with double action lock and 20mm opening
- Heavy duty stitched at both ends.
- Combine with FS33343, FS33300, FS33381 descenders
- Combine with FS33340, FS33325, FS33320 rope grabs
- Length/Weight 5m - 0,7 Kg | 10m - 0,9 Kg | 15m - 1,1 Kg
20m - 1,3 Kg | 25m - 1,5 Kg | 30m - 1,7 Kg | 40m - 2 Kg
50m - 2,2 Kg | 65m - 2,6 Kg | 100m - 3,0 Kg

CE EN353-2



FS735

Anchor Line Roofwalker

- Designed for Pro roof users
- 2 Large hooks in light alloy aluminium with 60mm opening double locking function (EN362 certified), 25kN
- 11mm Mamba Negra rope
- 20mm opening light alloy karabiner with double locking function
- Max™ device one-hand length adjuster in light aluminum
- Energy absorber pack limits impact force below 6kN
- Combine with harness FS221 Roofwalker
- Length/Weight 5m - 0,9 Kg | 10m - 1,2 Kg | 15m - 1,5 Kg
20m - 1,8 Kg or 25m - 2,1 Kg

CE EN353-2



FS736

Anchor Line

- Large hook in aluminium with 60mm opening double locking function (EN362 certified), 25kN
- 11mm Kermmantle rope EN1891-A, 3265daN
- Energy absorber pack limits impact force below 6kN
- Designed for Roof users
- Length/Weight 5m - 0,6 Kg | 10m - 0,9 Kg | 15m - 1,2 Kg
20m - 1,5 Kg or 25m - 1,8 Kg

CE EN353-2

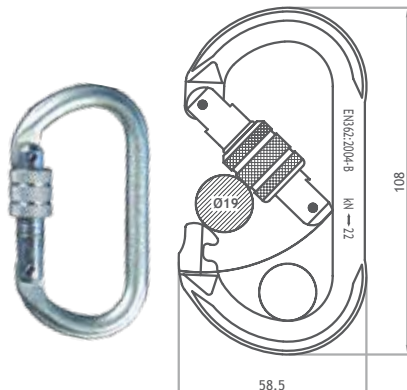
Karabiners

FS802

Zinc-plated Steel Karabiner

- Strength 22 kN
- Opening 19mm
- Screw-lock closure
- Weight 0,16 Kg
- Also available stainless steel (FS846)

CE EN362

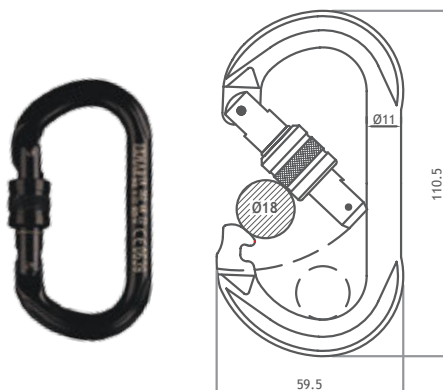


FS820

Aluminium Alloy Karabiner

- Strength 22 kN
- Opening 18mm
- Screw-lock closure
- Weight 0,09 Kg

CE EN362

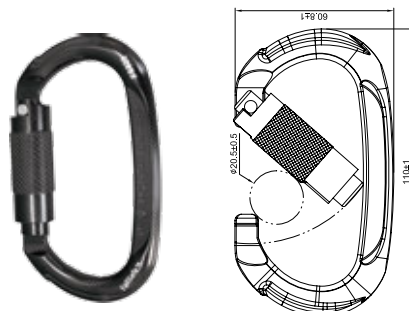


FS823

Aluminium Alloy Karabiner

- Strength 22 kN
- Opening 20mm
- Auto Twist-lock closure
- Catch free nose
- Weight 0,10 Kg

CE EN362

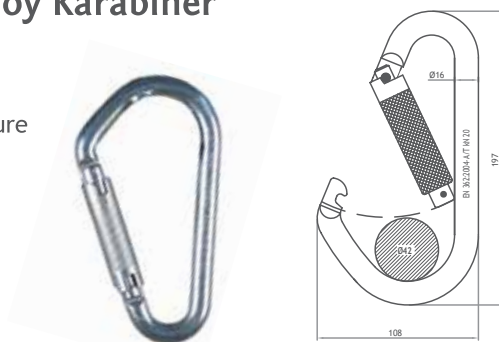


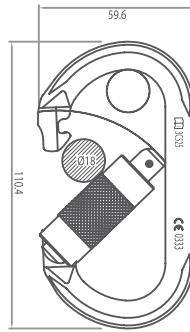
FS829

Aluminium Alloy Karabiner

- Strength 20 kN
- Opening 42mm
- Auto Twist-lock closure
- Weight 0,27 Kg

CE EN362



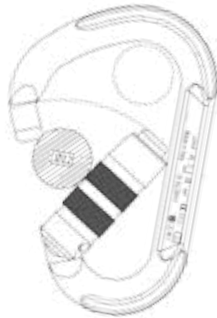


FS33500-2L

Zinc-plated Steel Oval Karabiner

- Strength 30 kN
- Opening 18mm
- Auto Twist-lock closure
- Weight 0,18 Kg

CE EN362

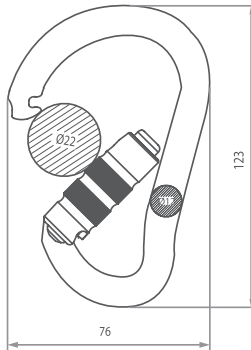


FS33547-3L

Aluminium Pear-shape HMS Karabiner

- Strength 23 kN
- Opening 22mm
- Triple action twist lock gate
- Catch free nose
- Automatic locking
- Weight 0,09 Kg

CE EN362

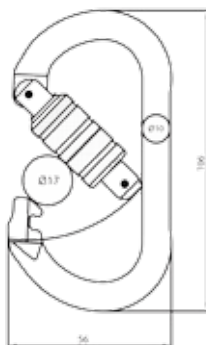


FS33665

Zinc-plated Steel HMS Karabiner

- Strength 40 kN
- Opening 22mm
- Auto Twist-lock closure
- Weight 0,288 Kg

CE EN362, ANSI



FS33664

Zinc-plated Steel Oval Karabiner

- Strength 30 kN
- Opening 17mm
- Auto Twist-lock closure
- Weight 197 g

CE EN362, ANSI

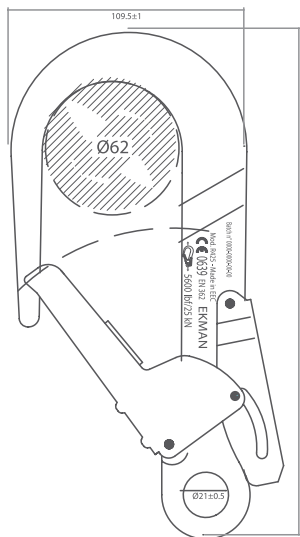
Hooks

FS821

Aluminium Alloy Hook

- Strength 25KN
- Opening 62mm
- Auto-lock closure
- Weight 0,455 Kg

CE EN362

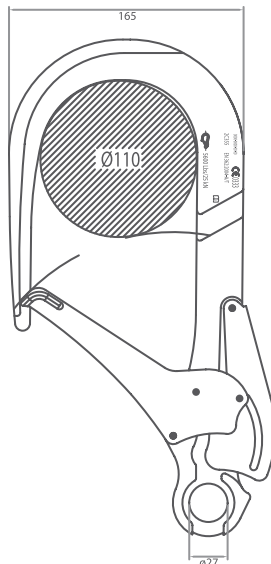


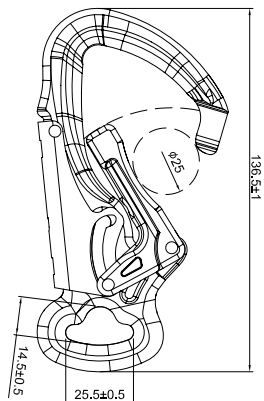
FS831

Aluminium Alloy XL Snap Hook

- Strength 25KN
- Opening 110mm
- Auto-lock closure
- Weight 0,927 Kg

CE EN362



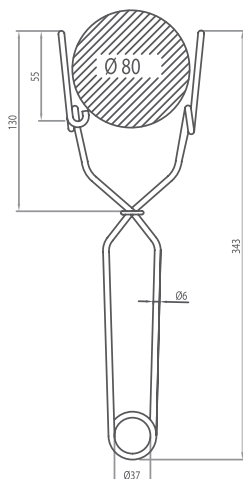


FS33562

Aluminium Light Alloy Hook

- Strength 22 kN
- Opening 25mm
- Auto-lock closure
- Catch free nose
- Weight 0,150 Kg

CE EN362

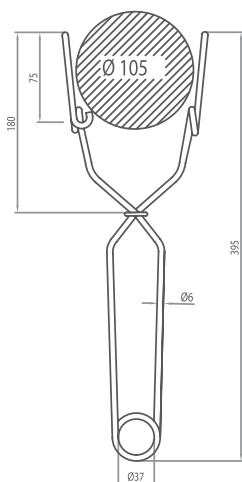


FS822

Stainless Steel Hook

- Strength 22KN
- Opening 80mm
- Auto-lock closure
- Weight 0,297 Kg

CE EN362

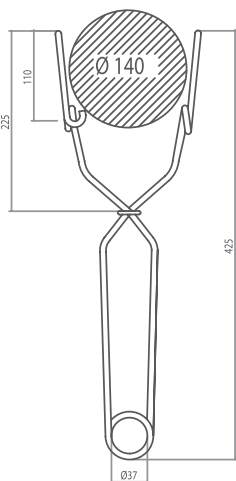


FS828

Stainless Steel Hook

- Strength 22KN
- Opening 105mm
- Auto-lock closure
- Weight 0,341 Kg

CE EN362



FS814

Stainless Steel Hook

- Strength 22KN
- Opening 140mm
- Auto-lock closure
- Weight 0,380 Kg

CE EN362

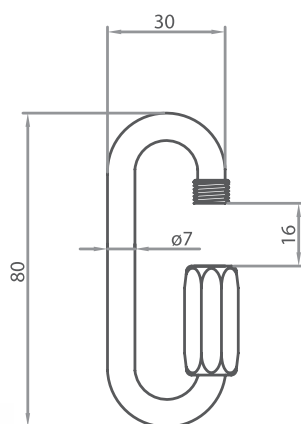
Maillon

FS802QL

Quick Link Oval

- Strength 25KN
- Opening 16mm
- Safety screw closure
- Zinc-plated steel
- Multi use quick link
- Weight 0,06 Kg

CE EN362

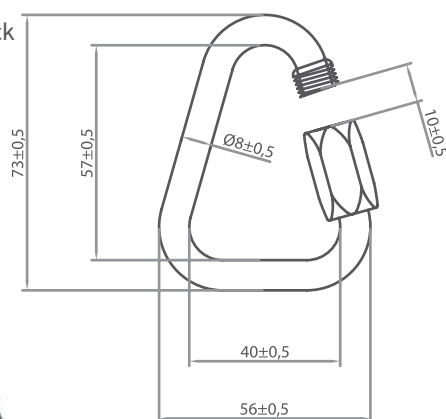


FS33561

Quick Link Triangular

- Strength 27KN
- Galvanized steel - Black
- Opening 10mm
- Weight 0,1 Kg

CE EN362



Descenders

FS33343

Sparrow Fall Safe™ Descender

- Self breaking descender
- Rope adjustment device certified to EN 12841:2006-C
- Rescue descender certified to EN 341:2011-2A.
- To be used only with static and semi static ropes certified to EN 1891 type A - 10.5 ÷ 11mm.
- Weight: 0,52Kg
- Recommended rope:
FSR01 - Mamba Negra 11mm
- Maximum rated load 150Kg

CE EN 12841:2006-C
For use with rope: 10.5 ÷ 11 mm

CE EN 341:2011-2A
For use with rope: 11mm



FS33300

DSD Plus Black Descender

- Double stop descender with new features
- Strength 25kN
- Maximum rated load 200Kg
- Weight 0,41 Kg
- Recommended rope:
FSR01 - Mamba Negra 11mm

CE EN 12841:2006-C
For use with rope: 9 ÷ 12 mm

CE EN 341:2011-2A
For use with rope: 11mm



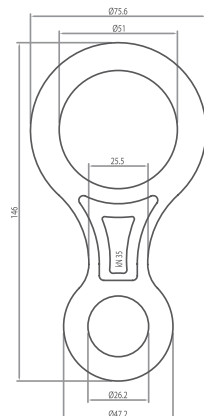
FS33381

Lory Descender Auto Blocking

- Rescue works or rope access as part of the security/backup system
- Highly polyvalent device, certificated with 5 EN
- Aluminium and Stainless steel
- Weight 0,37 Kg
- For use with rope: 8-13mm
- Recommended rope:
FSR01 - Mamba Negra 11mm

CE EN341 | EN353-2
EN358 | EN12841 | EN15151



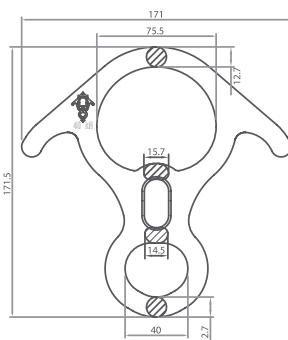


FS33360

Figure-8 Manual Descender

- Strength 35KN
- Rescue and Evacuation
- Safe system
- Simple and Polivalent
- Light Alloy Aluminium
- Indispensable for rope access
- Recommended rope:
FSR01 - Mamba Negra 11mm
- Weight 0,125 Kg

UIAA



FS33361

Figure-8 Advance Manual Descender

- Strength 40KN
- Rescue and Evacuation
- Safe system
- Simple and Polivalent
- Light Alloy Aluminium
- Indispensable for rope access
- 2 ears that allows making a single or double wrapped braking
- Wide central opening allows knots to pass through without jamming
- Recommended rope:
FSR01 - Mamba Negra 11mm
- Weight 0,243 Kg

UIAA



See More

FS160-001

Harken PowerSeat™ Gas version

The PowerSeat™, the first of its kind, provides the quality, convenience, and safety that people working in such environments deserve.

- Semi static 10mm-12.7mm | EN1891 Rope
- Safe Working Load : 273 kg
- Maximum Load on Seat: 150 kg (330.7 lb)
- Ascent speed: 0-15 m/min (120 kg) | 0-11 m/min (273 kg)
- Range: 600m (273 kg load)
- Reduction Ratio: 157,4:1
- Weight: 14,5 kg
- Dimensions: 815.5 x 471 x 325 mm
- Recommended height range: 0 m - 1500m



Electrical powered version also available Ref. FS160-003

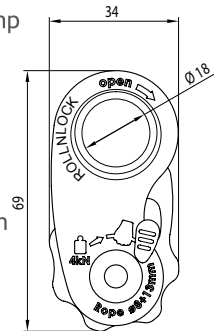


Rope Clamps

FS33342

RollNLock

- Ultra-light pulley/rope clamp
- Exceptional use with webbing 10÷16mm
- Breaking strength: 20kN
- Weight: 0,08Kg
- For use with rope: 8-13mm
- Recommended rope: FSR01 - Mamba Negra 11mm



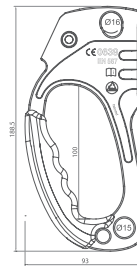
ULTRA-LIGHT
69x34mm, 0,08kg

CE EN 12278:2007
EN 567:1997

FS33330

Pro Left Hand Ascender

- Ergonomic rubber handle prevents hand slipping
- Rope anti-jamming release system that activates at the slightest downward movement
- Three slots in the cam to prevent the accumulation of mud
- For use with rope: 8-13mm
- 2 holes for connection
- Weight 0,215 Kg



CE EN567 EN12841

FS33331

Pro Right Hand Ascender

- Ergonomic rubber handle prevents hand slipping
- Rope anti-jamming release system that activates at the slightest downward movement
- Three slots in the cam to prevent the accumulation of mud
- For use with rope: 8-13mm
- 2 holes for connection
- Weight 0,215 Kg



CE EN567 EN12841

FS33380

Chest Mounted Ascender

- Recommended for work positioning and ropes with vertical anchor points
- For 10,5 to 12,7mm ropes (EN1891-A)
- For use with rope: 8mm - 13mm
- Light aluminum
- Weight 0,17 Kg



CE EN567

Rope Grab

FS33340

Easy Move Fall Safe™ - Rope Grab

- Light, All-in-one and Compact
- All-in-one fall arrester: rope adjuster, rope tool and ascender device
- Weightless and handy to carry and to work.
- It can be manually stopped on the rope.
- Developed to grip also on dirty or icy ropes

Weight: 0,19Kg

Recommended rope FSR01, FS630



CE EN353-2 : 2002 | EN358:1999 | EN12841:2006 A/B

FS33325

Buddy - Rope Grab

- Recommended for work positioning and ropes with vertical anchor points
- For 10,5 to 11mm ropes (EN1891-A)
- Recommended rope FSR65, FS630
- Light aluminum
- Weight 0,20 Kg

CE EN353-2

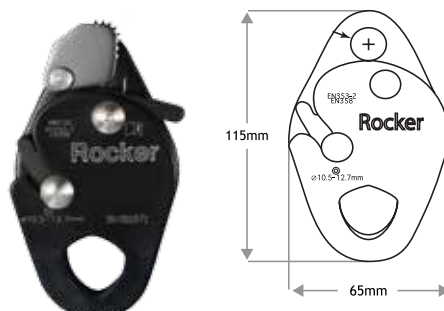


FS33320

Rocker - Rope Grab

- Recommended for work positioning and ropes with vertical anchor points
- For 10,5 to 12,7mm ropes (EN1891-A)
- Recommended rope FSR01, FS630
- Light aluminum
- Weight 0,17 Kg

CE EN353-2 EN358



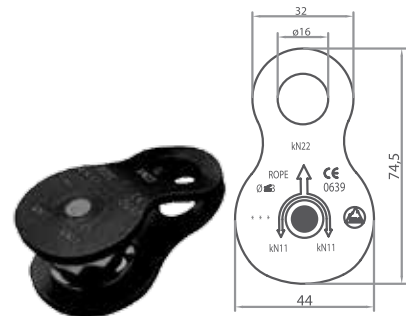
Pulleys

FS33400

Micro Alloy Pulley

- Oscillating side plates
- Sheave mounted on self-lubricating bushings
- Light Alloy Aluminium
- For use with ropes $\varnothing \leq 13$ mm.
- Breaking strength 22KN
- Weight 0,095 Kg

CE EN12278



FS33403

Mobile Double Pulley

- Versatile and compact light alloy pulley with mobile flanges.
- Features additional attachment point to allow for diverse and complex hauling operations. Allows for insertion of three carabiners in the upper eyelet and one in the lower eyelet.
- Assembled on ball-bearings.
- For use with ropes $\varnothing \leq 13$ mm.
- Weight: 210g

CE EN 12278:2007

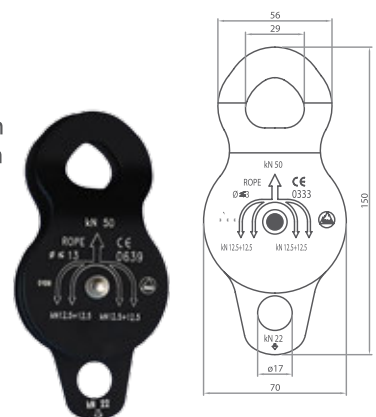


FS33405

Micro Alloy Pulley

- Oscillating side plates
- Twin sheaves mounted on ball bearings
- Up to 3 connectors can be hooked in the large eyelet plus 1 connector on the smaller eyelet
- Light Alloy Aluminium
- For use with ropes $\varnothing \leq 13$ mm.
- Breaking strength 50KN
- Weight 0,345 Kg

CE EN12278

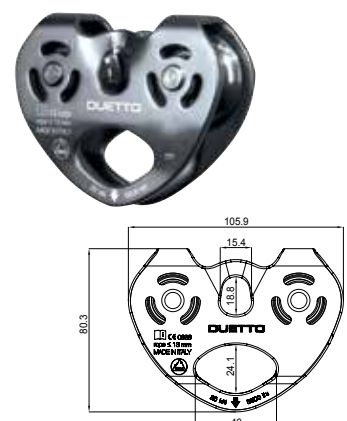


FS33341

Duetto Pulley

- Light, strong and versatile.
- Made of polished light alloy.
- Sheaves mounded with 4 ball bearings.
- For use with ropes $\varnothing \leq 13$ mm.
- Up to three connectors can be hooked in the lower eyelet

CE EN 12278:2007



Anchor Points

FS881

Quick Release Removable Anchor

- Versatile, portable concrete anchorage
- Used exclusively for fall protection,
- Toggle lock can be placed in:
horizontal surfaces; vertical
surfaces; overhead/ceiling surfaces
- Weight 0,2 Kg
- For concrete

CE EN795-B | ANSI Z359.1



FS883

Removable Anchor - Toggle Lock

- Versatile, portable concrete/steel anchorage
- Used exclusively for fall protection,
- Toggle lock can be placed in: horizontal surfaces; vertical
surfaces; overhead/ceiling surfaces
- Weight 0,2 Kg
- For steel or concrete

CE EN795-B | ANSI Z359.1



FS701

Anchor Point

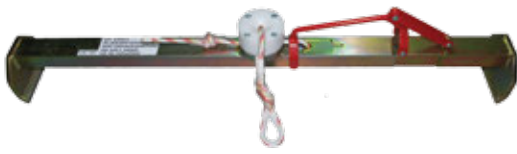
- Stainless steel
- Breaking strength 25KN
- Easy to install
- Permanent fall arrest point
- Weight 0,08 Kg

CE EN795-A



FS882

Fall Safe™ Combiclump



- Anchor for prefab concrete slabs
- Easy to use, can be fitted with one hand
- Anchor clamp with anchor rope and automatic handle.
- Weight: 12kg
- Use: one person only
- Concrete floor slabs length 1,2m slabs
- Fits

CE EN795 Class B

FS702

Safe Anchor



The SafeAnchor is an integral unit and the connection point is fixed within the unit and cannot be accidentally disconnected by the user therefore safeguarding the safety of the person.

- External components are stainless steel AISI 316
- In accordance with EN795 Class A1 One man anchor point
- Tested by notify body APAVE
- Polished finish to exposed face
- Three available lengths
- Push to hide, push to show
- Weight 0,247 Kg
- Can be retrofitted to existing buildings for safe work practice
- Aesthetically pleasing once fitted for application
- The SafeAnchor is also manufactured for abseiling applications
- Suits ALL concrete applications and can be used in wall, floor or overhead installations for fall arrest

CE EN795 class A1

FS860

Beam Anchor



- High strength alloy
- 2 reduced friction nylon rollers
- 2 double-toothed pawls
- Center positioning retainer prevents jamming on beam
- Fits 88 to 355mm beams
- 31mm thickness
- Length 0,47 m
- Weight 1,9 Kg

CE EN795-B

FS860

Fall Safe™ Beam Runner



- A removable and reusable rolling I-beam anchor, easy to place and remove.
- This anchor is designed to easily roll along the beam while trailing the worker.
- UTS: 5,000-lbs /22kN
- Weight 3,5Kg

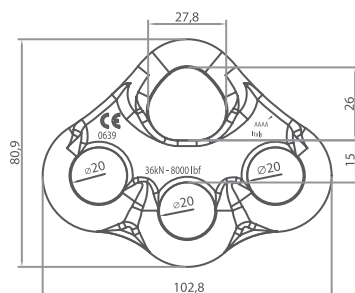
CE ANSI Z359.1-2007, Z359.7-2011 / OSHA 1926.502 CE 0321/ EN795:1996 (+A1:2000) Class B

Connection Elements

FS33351

4-slot Anchor Plate

- Safe system
- Simple and polyvalent
- Light alloy hot forged
- indispensable for rope access
- Breaking strength > 36KN
- Weight 0,071 Kg



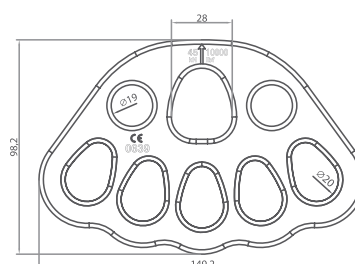
CE EN12275



FS33352

8-slot Anchor Plate

- Safe system
- Simple and polyvalent
- Light alloy aluminium
- indispensable for rope access
- Breaking strength > 45KN
- Weight 0,136 Kg



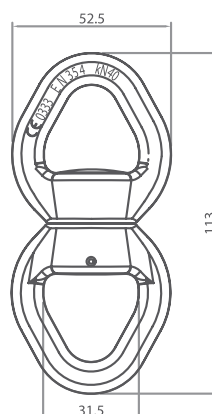
CE EN12275



FS33370

Swivel mounted on Ball Bearings

- Avoids rope twisting if the load rotates along the axis
- Simple and polyvalent
- Light alloy aluminium
- indispensable for rope access
- Breaking strength > 40KN
- Weight 0,17 Kg



CE EN354



Anchor Straps

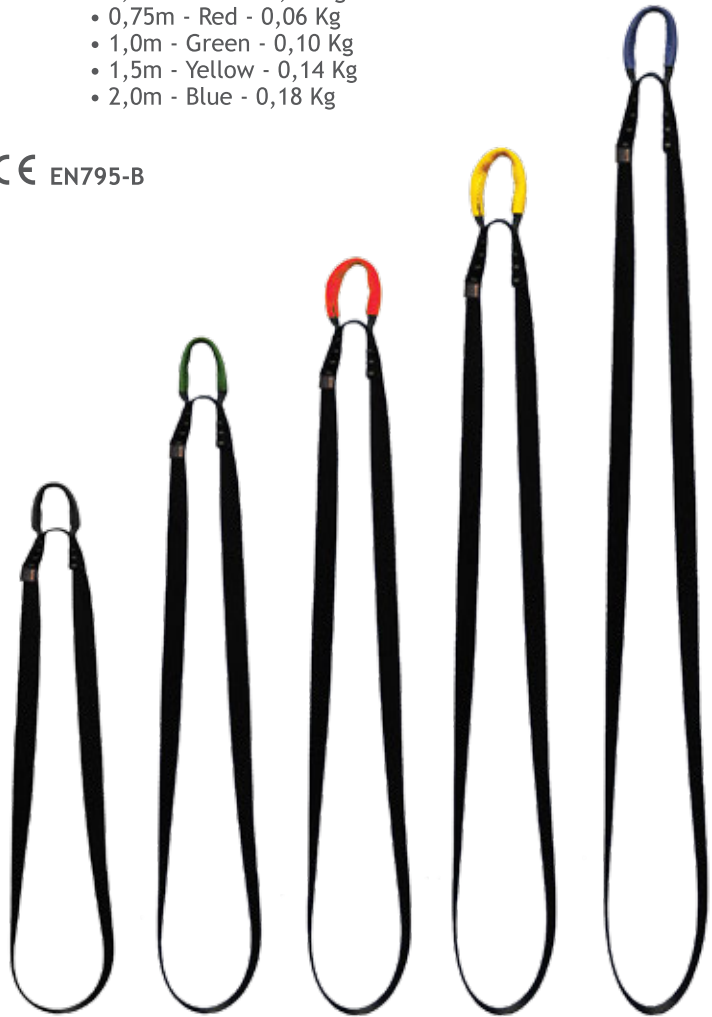
FS805

Webbing loops

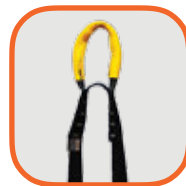
- Breaking strength 23kN
- 25mm polyester webbing
- Loops covered in polyester, reduces abrasion
- High-strength stitches
- Available in four lengths:

- 0,5m - Black - 0,06 Kg
- 0,75m - Red - 0,06 Kg
- 1,0m - Green - 0,10 Kg
- 1,5m - Yellow - 0,14 Kg
- 2,0m - Blue - 0,18 Kg

CE EN795-B



25mm polyester webbing



Loops covered in polyester



High strength stitches



FS800

Anchor Sling

- Strength to 20KN
- Heavy duty 27mm webbing strap
- Length/Weight : 0,5m - 0,1Kg | 0,75m - 0,15Kg | 1m - 0,2Kg
1,5m - 0,25Kg | 2m - 0,3Kg

CE EN795-B



FS801

Anchor Strop

- 45mm Heavy-duty polyester webbing
- D-ring connector
- Breaking strength 22KN
- Length/Weight
 - 1,0m - 0,30 Kg
 - 2,0m - 0,38 Kg
 - 3,0m - 0,46 Kg
 - 4,0m - 0,54 Kg

CE EN795-B



FS803

Anchor Wire

- 8mm Galvanized steel wire with protective plastic surface
- For temporary and portable fall arrest attachment.
- FS802 Steel karabiner
- Breaking strength 30KN
- Length/Weight
 - 1,0m - 0,5 Kg
 - 2,0m - 1,0 Kg
 - 3,0m - 1,5 Kg
 - 4,0m - 2,0 Kg

CE EN795-B

FS804

Lifeline Safewalk

- Portable Horizontal lifeline system
- Up to 2 person use
- Secures side movements
- Includes FS8001 Bag
- Length/Weight
 - 5m - 4,0 Kg
 - 10m - 4,3 Kg
 - 20m - 4,6 Kg

CE EN795-B



Ropes

Fall Safe™ static ropes, also commonly known as Low Stretch Kernmantel ropes, are strong, low stretch ropes intended for use in personnel rope access, rescue and in speleology. The ropes have low extension during normal working procedure but have the capacity to withstand forces generated by a fall.

Main Characteristics:

- Exceeds requirements of EN 1891:1998
- Strong and durable, low extension and low shrinkage
- Nylon Kernmantel construction
- Flexible with low drag, type 'A' and 'B' available
- Traceable Identification

FSR01

Static Rope - 11mm - Mamba Negra

- Material: Polyamide
- Diameter: 11mm
- Static strengths 35,6 kN
- Weight per meter 74,6 g/m

CE EN1891 - Type A



FSR02

Static Rope - 11mm - Icy White

- Material: Polyamide
- Diameter: 11mm
- Static strengths 35,6 kN
- Weight per meter 74,6 g/m

CE EN1891 - Type A



FSR05

Static Rope - 10,5mm - Mamba Negra

- Material: Polyamide
- Diameter: 10,5mm
- Static strengths 30,6 kN
- Weight per meter 67,9 g/m

CE EN1891 - Type A



FSR06

Static Rope - 10,5mm - Icy White

- Material: Polyamide
- Diameter: 10,5mm
- Static strengths 30,6 kN
- Weight per meter 67,9 g/m

CE EN1891 - Type A





FSR10

Static Rope - 9mm - Mamba Negra

- Material: Polyamide
- Diameter: 9mm
- Static strengths 26,7 kN
- Weight per meter 53,4 g/m
- Impact force 3,82 kN

CE EN1891 - Type B



FSR11

Static Rope - 9mm - Icy White

- Material: Polyamide
- Diameter: 9mm
- Static strengths 26,7 kN
- Weight per meter 53,4 g/m

CE EN1891 - Type B



FSR12

Static Rope - 12mm - Mamba Negra

- Material: Polyamide
- Diameter: 12mm
- Static strengths 45 kN
- Weight per meter 90,3 g/m

CE EN1891 - Type A



FSR13

Static Rope - 12mm - Icy White

- Material: Polyamide
- Diameter: 12mm
- Static strengths 45 kN
- Weight per meter 90,3 g/m

CE EN1891 - Type A



FS850

Flexible Protection

- Helps protect a fixed rope from abrasion
- Lightweight, durable PVC sheath
- Velcro closure
- Length 1,2m
- Weight 0,13 Kg

Carrying Bags

FS8001

Fall Safe™ Carrying Bag for Lifeline

- Capacity 18L
- Wide reinforced opening
- Reinforced opening bases
- Booklets, instructions pockets
- Carrying handle
- Easy opening - Fixlock system
- Personalized printing available
- Heavy duty polyester
- Dimensions 290 x 350mm
- Weight 0,70 Kg



FS8125

Fall Safe™ Carrying Bag Lite

- Capacity 12L
- Wide reinforced opening
- Carrying handle
- Easy opening zipper system
- Personalized printing available
- Heavy duty polyester
- Dimensions 330 x 200mm
- Weight 0,7 Kg



FS8150

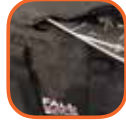
Fall Safe™ Carrying Bag Standard

- Capacity 40L
- Wide reinforced opening
- Carrying handle
- Easy opening zipper system
- Personalized printing available
- Heavy duty polyester
- Dimensions 480 x 250mm
- Weight 0,8 Kg





Shoulder Strap support



Resistant middle center ZIP

FS8201

Fall Safe™ Carrying Bag Pro

- Heavy duty polyester
- Wide reinforced opening
- 2 side pockets
- 1 internal pocket for instructions
- Personalized printing available
- Reinforced Base
- Dimensions 610 x 280mm
- Weight 670g



FS8205

Fall Safe™ Rucksack Standard

- Capacity 22L
- Reinforced opening
- Carrying handle
- Easy opening zipper system
- Personalized printing available
- Heavy duty polyester
- Dimensions 480 x 320mm
- Weight 0,5 Kg



FS8100

Fall Safe™ Carrying Bag XL

- Capacity 60L
- Wide reinforced opening
- Carrying handle
- Resists water splashes, do not engulf
- Personalized printing available
- Heavy duty PVC
- Dimensions 520 x 730mm
- Weight 1,7 Kg



FS8101

Fall Safe™ Rucksack Pro

- Capacity 20L
- Reinforced opening
- Carrying handle
- Easy opening zipper system
- Personalized printing available
- Heavy duty polyester
- Dimensions 460 x 300mm
- Weight 0,5 Kg



FS8110

Fall Safe™ Rope Access Bag

- Capacity 22L
- Bag has multiple inner compartments and is closed by a pulling string and barrel lock
- Heavy Duty PVC
- Fall Safe™ reflective logo
- Dimensions 350 x 270mm
- Weight 0,9 Kg
- With shoulder straps



FS8208

Fall Safe™ Ropes Bag 40

- Capacity 40L
- Reinforced opening
- Carrying handle
- Resists water splashes, do not engulf
- Personalized printing available
- Heavy duty PVC
- X-treme™ reflective logo
- Dimensions 920 x 450mm
- Weight 1,0 Kg
- With shoulder straps



FS8209

Fall Safe™ Ropes Bag 60

- Capacity 60L
- Reinforced opening
- Carrying handle
- Resists water splashes, do not engulf
- Personalized printing available
- Heavy duty PVC
- X-treme™ reflective logo
- Dimensions 980 x 450mm
- Weight 1,2 Kg
- With shoulder straps



FS33900

Fall Safe™ Arborist Bag

- Heavy duty material in PVC
- Capacity: 30L
- Weight 1,7 Kg
- 2 large pockets for gear

Tool Bags

FS8008

Building Tools Pouch

- Heavy duty polyester
- 4 main pockets for fasteners and tools
- 2 smaller pockets and tools holders
- Nickel karabiner for tool holders connection
- Harness fitting straps
- Weight 0,288 Kg



FS8009

Drill Holder

- Heavy duty polyester
- Regular drills
- Security strap with snap closure
- Nickel karabiner for tool holders connection
- Harness fitting straps
- Weight 0,174 Kg



FS8018

Electrician Pouch

- Heavy duty polyester
- 3 main pockets for fasteners and tools
- Tools holders
- Nickel karabiner for tool holders connection
- Harness fitting straps
- Weight 0,200 Kg



FS8020

Bolts Pouch

- Heavy duty polyester
- Wide mouth bolts pouch
- Reinforced opening
- Nickel karabiner for tool holders connection
- Harness fitting straps
- Weight 0,221 Kg



**FALL
SAFE**
We do it. You're safer.



FS8024

Materials/Tools Holder Extra

- Black leather
- Large pockets for tools/materials
- 3 extra smaller front pockets
- Quick steel connect hooks and wrap around system
- Weight 0,200 Kg



FS8025

Bolts Bag Easy

- Black leather
- Large pocket with velcro lock
- Quick steel connect hooks and wrap around system
- Weight 0,25 Kg



FS8026

Tools Holder Multi

- Black leather
- Several layers of various sizes pockets
- Quick steel connect hooks and wrap around system
- Weight 0,300 Kg



FS8029

Tools Holder All Round

- Black leather
- Several layers of various sizes pockets
- Quick steel connect hooks and wrap around system
- Weight 0,200 Kg

Rescue

FS402

Fall Protection Coverall - Rescue

- Provides rescue from confined spaces
- Integrated rescue harness
- Ultra light weight materials
- 45mm polyester webbing, breaking strength > 25KN
- Stitches with high strength polyester thread No. 10 > 180N
- Dorsal D-ring
- 2 shoulder rescue V-rings
- Sleeves with velcro adjustment
- Large pockets at front, back, chest and knees
- Size adjustment at chest, waist and legs
- Deluxe buckles with double safety function
- Heavy duty fabric and zipper
- Sizes 42 - 56
- Colors 10 Orange, 20 Hi-vis orange, 30 Hi-vis lime, 40 Antiflame
- Weight 1,6 Kg
- Use together with the FS806 rescue Y-pad

CE EN361 EN1497



2 shoulder
V-rings



See More

Antiflame
available





FS236

Fall Protection Harness Rescue

- Dorsal and front D-ring for attachment of fall arrest systems
- 2 V-rings at shoulder for rescue from confined spaces
- Size adjustment at shoulders/chest and legs provides perfect fit
- Easy to put on safety harness
- Deluxe quick connect buckles in high strength steel
- Sit support strap stays low and comfortable, takes up forces during a fall
- Harness built in 2 colors for easier orientation when putting on
- Fall arrest indicator
- Sizes S/M, L/XL, XXL
- Weight 1,2 Kg
- Recommended accessory FS806 rescue Y-pad

CE EN361 EN1497



FS806

Rescue Y-pad

Ideal for rescue and retrieval applications. When used during emergency retrieval operations, the Y-pad keeps the victim in an upright position and reduces the space needed to extract them.

- Central D-ring with spreader bar
- Combine with FS236 or FS402
- Aluminium black D-ring, breaking strength min. 22kN (EN362)
- High strength polyester stitching thread No. 10 - 180N
- 45mm polyester webbing, breaking strength >25KN
- Aluminium snap hook, breaking strength min. 22kN (EN362)
- Length 0,6m
- Weight 0,85 Kg

CE



FS970

Aluminium Tripod

- Provides a safe anchor point
- Height 1,55-2,55m
- Weight 15 Kg

CE EN795-B

Accessories



FS833
Pulley wheel
for tripod



FS958
Load winch
15m/250 Kg



FS960-18M
Fall arrest
Block 18m



FS971
Bracket
for tripod



FS905

Saveman™



Fall Safe™ Video

- Descend/rescue equipment for 1 person
- Small and compact
- Kevlar/Aramid line
- Manual descend unit, easy to use
- Attached karabiner incl. anchor sling
- Waterproof and sealed compact bag attach easily to belt
- Easily connects to harness belt
- Length/Weight 15m - 0,6 Kg | 20m - 0,7 Kg | 30m - 1,0 Kg

CE EN341 class D - one time use only!

IMPORTANT! This equipment requires training before use.
Ask for Fall Safe™ Training Services.



FS906

2-SAFE™

- Descend/rescue equipment for 1 and 2 persons
- Small and compact unit
- Complies with Swedish EBR regulations
- Rope Ø9mm EN1891, 2215daN
- Supplied with storage bag
- Storage bag fits easily to harness belt
- Aluminum karabiner with catch-free screw lock
- Breaking strength over 900 Kg for system
- Length/Weight 5m - 1,2 Kg | 40m - 2,5 Kg

CE EN341 class D - one time use only!

IMPORTANT! This equipment requires training before use.
Ask for Fall Safe™ Training Services.



FS910

Pull Safe Lite

- Ascend/rescue equipment for 1 person
- The lightest, most compact 6÷1 winch system on the market
- 5mm polyester rope
- Supplied with storage bag
- Storage bag fits easily to harness belt
- Aluminum karabiner with catch-free triple lock
- Breaking strength over 600 Kg for system
- Length/Weight 1,4m - 0,8 Kg
- Max working load 150Kg

CE EN13157



Go



Stop

IMPORTANT! This equipment requires training before use.
Ask for Fall Safe™ Training Services.



See More



FS900RA

Rescue and Descend System Pullsafe

- Length 10, 20 or 30m
- Descend device DSD Plus for up to 2 persons
- Integrated light weight winch system, avoid cutting the rope!
- Storage bag in PVC
- Weight 10m - 3,0Kg 20m - 3,4 Kg 30m - 3,8 Kg

IMPORTANT! This equipment requires training before use.
Ask for Fall Safe™ Training Services.

CE EN341 EN12841 EN567



See More



FS907

Rescue and Evacuation System

Automatic descend system speed 0,9m/sec.

- Manual lift ascend/descend
- Length 20m, other lengths available on request
- Includes rescue pole with extension up to 3,6m
- Storage bag with special compartment for the pole
- Weight 4,0 Kg

IMPORTANT! This equipment requires training before use.
Ask for Fall Safe™ Training Services.

CE EN341 class A EN1496



FS901

Rescue and Working Device Kit 2:1

- Fall Safe™ rescue basic unit
- Rope stop unit
- Pulley 2:1
- 5x steel karabiner
- PVC bag
- Kermantel rope
- Length/Weight 20m - 4,0Kg 30m - 4,4Kg 60m - 4,7Kg 90m - 5,0Kg
- Also available 3:1 kit ref FS902

IMPORTANT! This equipment requires training before use.
Ask for Fall Safe™ Training Services.

CE EN341 EN1496

FS973

Evacuation System Automatic

1 person abseiling device with automatic speed regulation. The brake controlled by centrifugal forces keeps the speed of the device constant during the entire abseiling process and enables a rapid and safe rescue.

- 2 personal rescue slings + 10mm kernmantel rope + storage bag
- Resistant to damp, heat, cold, corrosion
- Speed approximate 0,9m/sec
- Optional load fastening variants (tube hook, rotational hook)
- Does not cause undue wear or damage to the rope
- Compact, stable size, low own weight
- Length/Weight
 - 20m - 2,6 Kg
 - 40m - 4,2 Kg
 - 60m - 5,6 Kg
 - 80m - 7,0 Kg
 - 100m - 8,4 Kg



CE EN341 class A EN1496

FS34000

Rescue Stretcher

- Orange high visibility PVC provides impermeability
- Victim immobilizer system (including arms, legs and head)
- Padded body
- 44mm polyester webbing
- High tenacity polyester stitching
- 1 person use
- Use for Horizontal or vertical lifts
- Weight 5 Kg



FS34001

Lifting Straps for Stretcher

- Easy and fast to use together with FS34000 stretcher
- 4 snap hooks that connect to 4 D-rings on stretcher
- Large D-ring attachment
- Breaking strength 20kN
- Weight 0,8 Kg



FS34002

Carrying Bag for Stretcher

- 2 large handles
- Orange PVC material
- Envelope like velcro opening
- Dimensions 2500 x 600 mm
- Weight 2,0 Kg



Extreme Environment

Offshore Vest

FS201KEV

Fall Protection Harness Welder

- Dorsal D-ring for attachment of fall arrest systems
- 2 front loops (to be together) attachment of fall arrest systems
- Full body harness specially design for welders, and workers that are exposed to flame, fire and associated to welding processes
- 44mm Nomex™/Kevlar webbing resists temperature up to 370 °C
- Metal parts in stainless steel and aluminium
- 3 point size adjustment
- Sizes: S/M, L/XL, XXL
- Weight 1,0 Kg

CE EN361



FS502KEV

Lanyard with Energy Absorber Welder

- Designed for welding applications
- Normex™ brand fiber webbing, resistant to 370 °C
- Energy absorber pack with cover flame retardant
- 1 karabiner and 2 large hooks
- Length 2m
- Weight 1,2 Kg



CE EN354 EN355



FS233

Fall Protection Harness Tuff

- 1 frontal D-ring for attachment of fall arrest systems
- 44mm webbing PES Biothane®, 25KN
- Sit support strap stays low and comfortable, takes up forces during a fall
- Designed for dirty jobs such as oil field work, offshore, roofing, painting and food industry
- Easy to clean after work as webbing protected by layer of PES Biothane®
- 5 point size adjustment
- Sizes: S/M, L/XL, XXL
- Weight 1,2 Kg

CE EN361



FS233
+
FS531
use together

FS531

Lanyard Energy Absorber Tuff

- Energy absorber pack •
- High strength polyester stitches thread no. 10 >180N •
- 60mm opening aluminum large hook, double locking •
- Designed for dirty jobs such as oil field work, offshore •
- roofing, painting and food industry •
- Easy to clean after work as webbing protected by layer of PES •
- 20mm opening aluminum karabiner, double locking •
- Length 1,5m •
- Weight 1,5 Kg •

CE EN354 EN355



FS3610

Fall Protection Offshore Vest

- Fall protection vest with integrated harness
- Dorsal D-ring for fall arrest systems
- 2 side D-rings for work positioning
- 2 large pockets for tools organization
- 3 point size adjustment
- Stainless steel standard buckles
- Anti-flame 100% cotton fabric
- Includes inflatable life jacket
- Sizes: S/M, L/XL, XXL
- Weight 3,0 Kg
- FS3610 (150N inflatable lifejacket)
- FS3620 (275N inflatable lifejacket)



CE EN358 EN361 EN369



FS054-RR-2M

Work Positioning Lanyard Lite

- 8-ring style length adjuster
- 2 karabiners stainless steel
- 11mm Kernmantel rope
- Heavy duty stitched ends
- Length/Weight 2,0m - 0,70 Kg

CE EN358



FS3610
FS054-RR-2M
FS502R-RS-2M
use together

FS502R-RS-2M

Double Lanyard Energy Absorber

- Y-leg lanyard •
- 2 Hooks + Karabiner •
- 11mm Kernmantel rope •
- Energy absorber pack •
- Heavy duty stitched ends •
- Length/Weight 2,0m - 0,45 Kg •

CE EN354 EN355





Fall Arrest Blocks

FS700

Fall Arrester Mini

- 45mm polyester webbing
- Energy absorber reduces forces below 6KN
- Fall indicator
- Breaking strength >15KN
- Compact, robust and economical, not serviceable
- Length 2,25m
- Weight 1,2 kg

CE EN360



FS920-BC

Fall Arrest Block 2m

- Fall arrest block 2m
- New innovative design, very light weight and durable
- Plastic housing
- Webbing
- Fall indicator
- Rotational Swivel
- Aluminium hook or karabiner with auto closure
- Weight 0,75kg

CE EN360



FS920-TC

Fall Arrest Block 2m

- Fall arrest block 2m
- New innovative design, very light weight and durable
- Plastic housing
- Webbing
- Fall indicator
- Rotational Swivel
- Aluminium hook or karabiner with auto closure
- Weight 0,35kg

CE EN360



FS920-TB
with hook FS821

FS921

Fall Arrest Block 3,5m

- Plastic housing
- Webbing
- Fall indicator
- Rotational swivel
- Aluminum hook with auto-closure
- Weight 1,2 Kg



Tested in a horizontal application,
over an sharp edge.

CE EN360





FS923

Fall Arrest Block 7m

- Plastic housing
- Webbing
- Fall indicator and Rotational swivel
- Aluminum hook with auto-closure
- Weight 1,8 Kg



Tested in a horizontal application, over an sharp edge.

CE EN360



FS956

Fall Arrest Block 9m

- Plastic housing
- Cable galvanized steel
- Fall indicator and Rotational swivel
- Aluminum hook with auto-closure
- Weight 3,7 Kg



Tested in a horizontal application, over an sharp edge.

CE EN360



FS966

Fall Arrest Block 12m

- Plastic housing
- Cable galvanized steel
- Fall indicator and Rotational swivel
- Aluminum hook with auto-closure
- Weight 4,9 Kg



Tested in a horizontal application, over an sharp edge.

CE EN360



FS954

Fall Arrest Block 18m

- Aluminium housing
- Cable galvanized steel
- Fall indicator and Rotational swivel
- Aluminum hook with auto-closure
- Weight 6,9 Kg



Tested in a horizontal application, over an sharp edge.

CE EN360



FS950

Fall Arrest Block 24m

- Plastic housing
- Cable galvanized steel
- Fall indicator and Rotational swivel
- Aluminum hook with auto-closure
- Weight 7,3 Kg



Tested in a horizontal application, over an sharp edge.

CE EN360



Zona Industrial da Varziela, Rua B - Lote 54
4480-620 Vila do Conde | Portugal, EU

T. +351 252 480 060
F. +351 252 480 069

www.fallsafe-online.com
facebook.com/fallsafeonline
[@fallsafe](https://twitter.com/fallsafe)